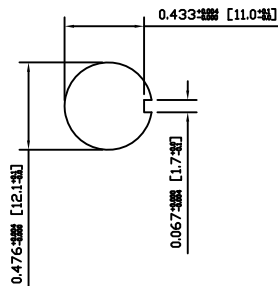
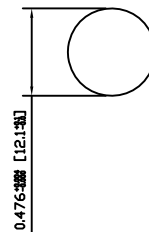


SUGGESTED PANEL CUTOUT



ALTERNATE PANEL CUTOUT



MATERIALS

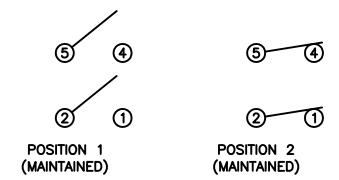
- BODY:**
Phenolic, UL94 V-0
- ACTUATOR:**
Nickel Plated Brass
- BUSHING:**
Nickel Plated Brass
- HOUSING:**
Stainless Steel
- HARDWARE:**
Nickel Plated Steel
- FUNCTION PLATE:**
Stainless Steel
- SPACER PLATE:**
Laminate Board
- SPRING:**
Steel
- PLUNGER:**
Nylon
- MOBILE CONTACT:**
Silver Plated Copper
- MOBILE CONTACT PIVOT:**
Silver Plated Copper
- CONTACTS:**
Silver Alloy Clad Copper
- TERMINALS:**
Brass

SPECIFICATIONS

- FUNCTION:**
2P1T OFF-ON
- RATINGS:**
ANSI/UL1054 and CAN/CSA C22.2 No.55 (E194579):
20A 125VAC [cURus]
15A 277VAC [cURus]
2HP 125/277VAC [cURus]
- CONTACT RESISTANCE:**
Initial: 50mΩ Max. at 50VAC
- INSULATION RESISTANCE:**
800MΩ Min. at 500VDC
- DIELECTRIC STRENGTH:**
1,500VAC for 1 Minute
- OPERATING LIFE:**
6,000 Cycles [cURus]
- TEMPERATURE:**
Operating: -20°C to 85°C [cURus]
- APPROVALS:**



SCHEMATIC



| | | | |
|----------------|------|----------|-----|
| ACTUATOR | B | 10/11/16 | CAB |
| BODY | B | 10/11/11 | CAB |
| MATERIALS | A | 09/06/03 | CAB |
| SPECIFICATIONS | A | 09/06/03 | CAB |
| REFERENCE | REV. | DATE | BY |

THE INFORMATION CONTAINED IN THIS DOCUMENT IS PROPRIETARY TO E-SWITCH AND IS NOT TO BE COPIED OR TRANSFERRED

| | | | | |
|------|-----------------------------------|----------|----------|----------|
| B | CORRECTED PANEL CUTOUT DIMENSIONS | 19380 | 10/11/16 | CAB |
| A | INITIAL RELEASE | PCRD0051 | 09/08/05 | CAB |
| REV. | DESCRIPTION | PCR | DATE | DRAWN BY |

| | |
|------------------------------------|------------|
| DIMENSIONS | |
| INCHES [MILLIMETERS] | |
| GENERAL TOLERANCES | |
| 0.000~0.236: ±0.004 [0~6: ±0.1] | |
| 0.236~1.181: ±0.012 [6~30: ±0.3] | |
| 1.181~4.724: ±0.020 [30~120: ±0.5] | |
| SCALE | PROJECTION |
| DRAWING NOT TO SCALE | 1st Angle |

| | | |
|-------------|-------------------|----------|
| | | |
| ST242D00 | | |
| ITEM NUMBER | DATE | REVISION |
| 34-ST242D00 | NOVEMBER 16, 2010 | B |