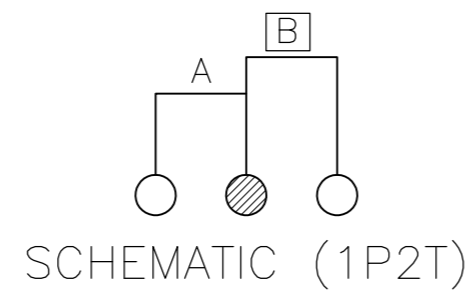
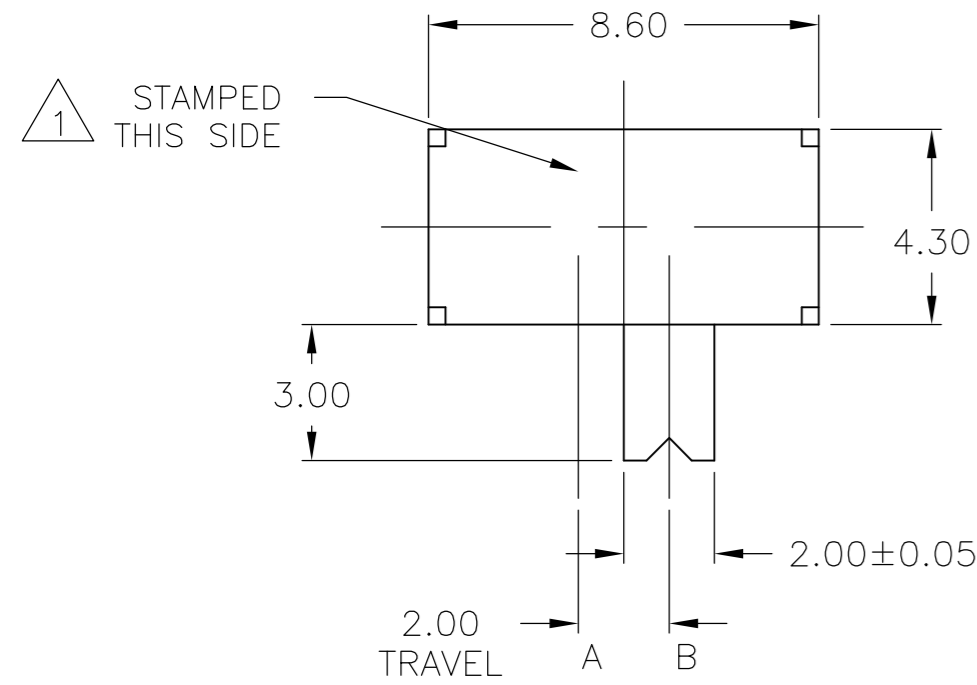


LOC		DIST		REVISIONS			
P	LTR	DESCRIPTION		DATE	DWN	APVD	
AD	00	B2	REVISED PER ECO-10-008611		24APR10	HMR	NE



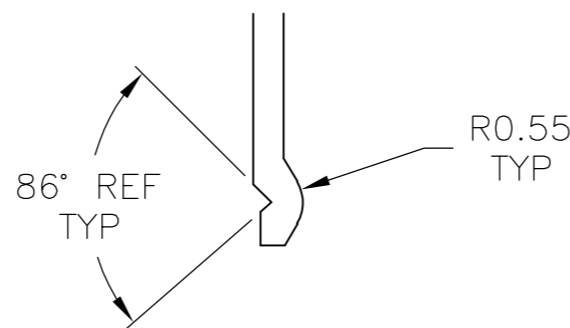
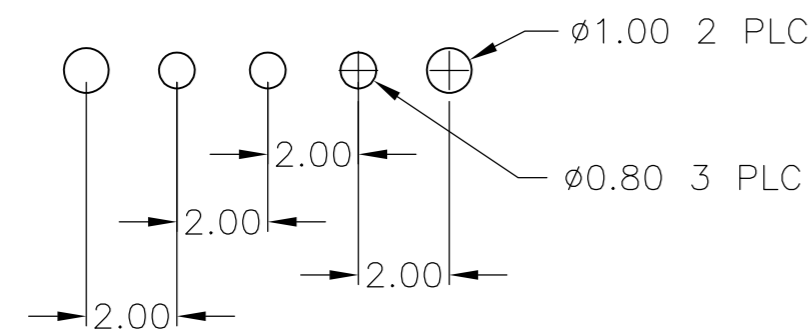
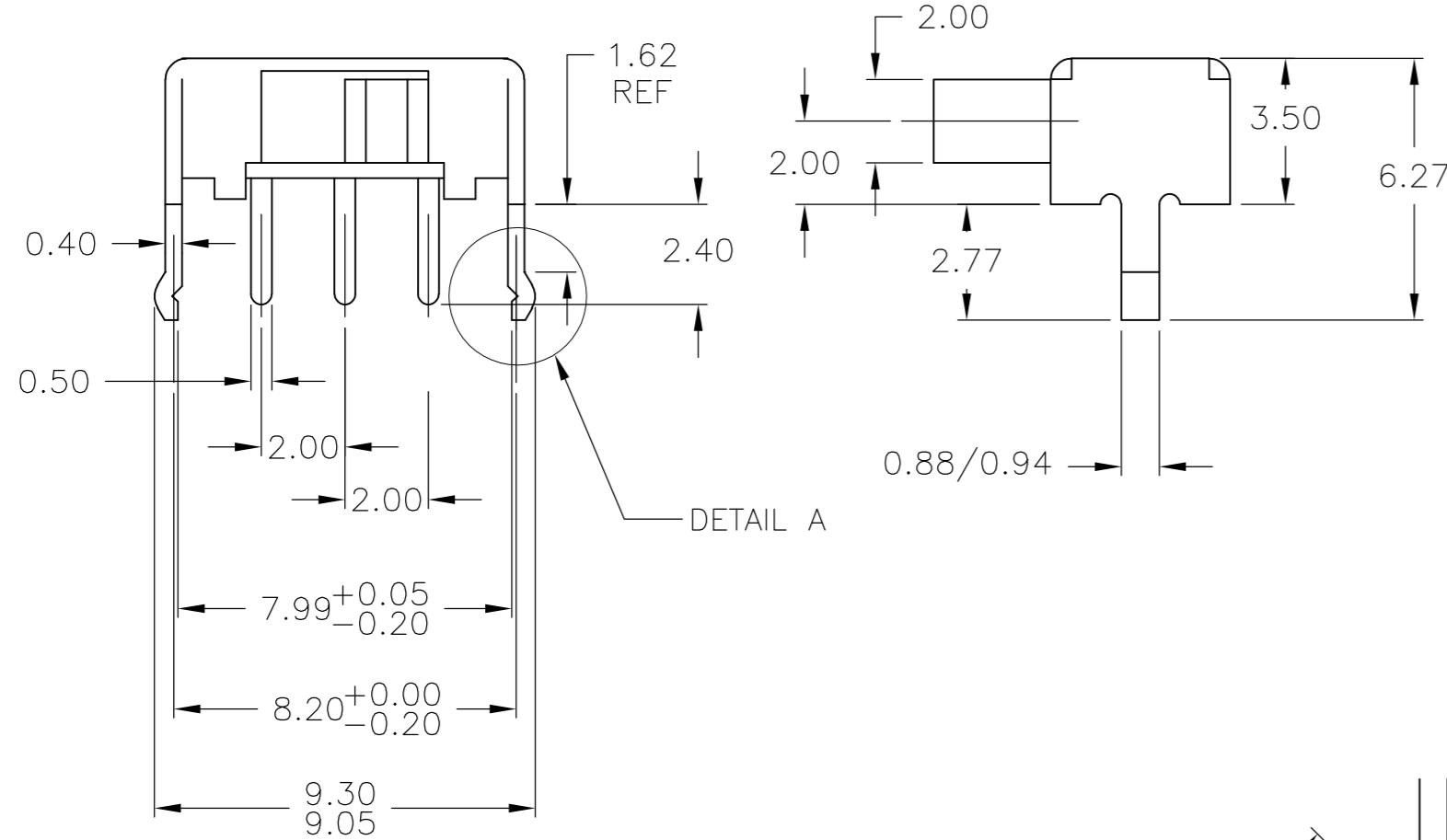
SPECIFICATIONS:
 SINGLE POLE DOUBLE THROW
 BREAK-BEFORE-MAKE

MATERIALS:
 FRAME: STEEL, TIN PLATE
 BOARD: PHENOLIC, NATURAL
 ACTUATOR: POM
 TERMINAL: COPPER ALLOY, FINISH: SILVER/NICKEL
 CONTACT: COPPER ALLOY, FINISH: SILVER

ELECTRICAL:
 CONTACT RATING, .2A@ 30V DC, PER EIA-448, METHOD 6
 INITIAL CONTACT RESISTANCE, 20 MILLIOHMS MAX, PER EIA-364-23B, EACH POSITION
 INSULATION RESISTANCE, 100 MEGOHM MIN. PER EIA-364-21C EACH POSITION
 DIELECTRIC STRENGTH, 500 VOLT AC, PER EIA-364-20B, CONDITION 1, EACH POSITION

MECHANICAL:
 ACTUATION FORCE, 200+/-100 GF
 ACTUATION TRAVEL, 2.0 MM
 LIFE EXPECTANCY, 10,000 CYCLES, PER EIA-448, METHOD 8 AND 9
 VIBRATION, PER EIA 364-28, CONDITION VII, LEVEL E
 MECHANICAL SHOCK, PER EIA-364-27, CONDITION A

ENVIRONMENTAL:
 OPERATING TEMPERATURE, -20 TO +70 DEGREES C, PER EIA 448, METHOD 10
 STORAGE TEMPERATURE, -25 TO +85 DEGREES C
 HUMIDITY AND TEMPERATURE CYCLING PER EIA-364-31B, METHOD III
 TEMPERATURE LIFE PER EIA-364-17B, METHOD B, TEMPERATURE TEST CONDITION 3, TIME CONDITION B
 THERMAL SHOCK, PER EIA-364-32C, -25 TO 85 DEGREES C
 SOLDERABILITY, PER EIA-364-52, CLASS 2, CATEGORY 1, 95% MINIMUM COVERAGE
 RESISTANCE TO SOLDER HEAT, PER 109-202, CONDITION B



DETAIL A
 SCALE 10:1

- 1 COUNTRY OF ORIGIN AND TE LOGO LOCATED APPROXIMATELY AS SHOWN
- 2 ALL MATERIALS AND FINISHES SHALL COMPLY WITH EU DIRECTIVE 2002/95/EC OF 27JAN2003 (ROHS)".

1825232

B

1825232-1

PART NUMBER

THIS DRAWING IS A CONTROLLED DOCUMENT.		DWN	R BROWN	29MAR05	Tyco Electronics Corporation Harrisburg, PA 17105-3608									
DIMENSIONS: mm		CHK	M SARVER	29MAR05										
TOLERANCES UNLESS OTHERWISE SPECIFIED:		APVD	M SARVER	29MAR05										
0 PLC ± - 1 PLC ± - 2 PLC ± 0.2 3 PLC ± - 4 PLC ± - ANGLES ± -		PRODUCT SPEC	NAME											
MATERIAL SEE NOTES		FINISH	SEE NOTES		WEIGHT	-	SIZE	A2	CAGE CODE	00779	DRAWING NO	C=1825232	RESTRICTED TO	-
SEE NOTES		SEE NOTES		CUSTOMER DRAWING		SCALE	6:1	SHEET	1 OF 1	REV	B2			

A