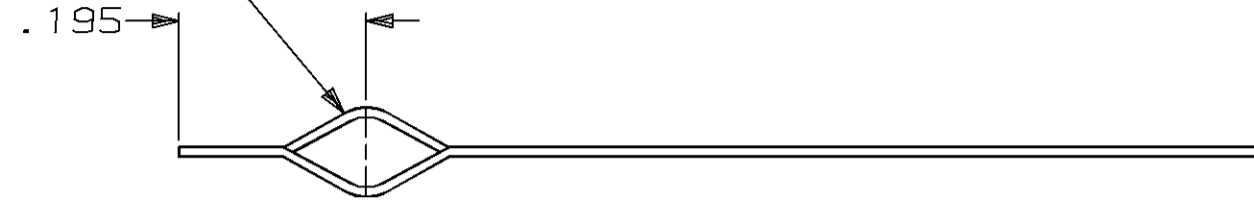


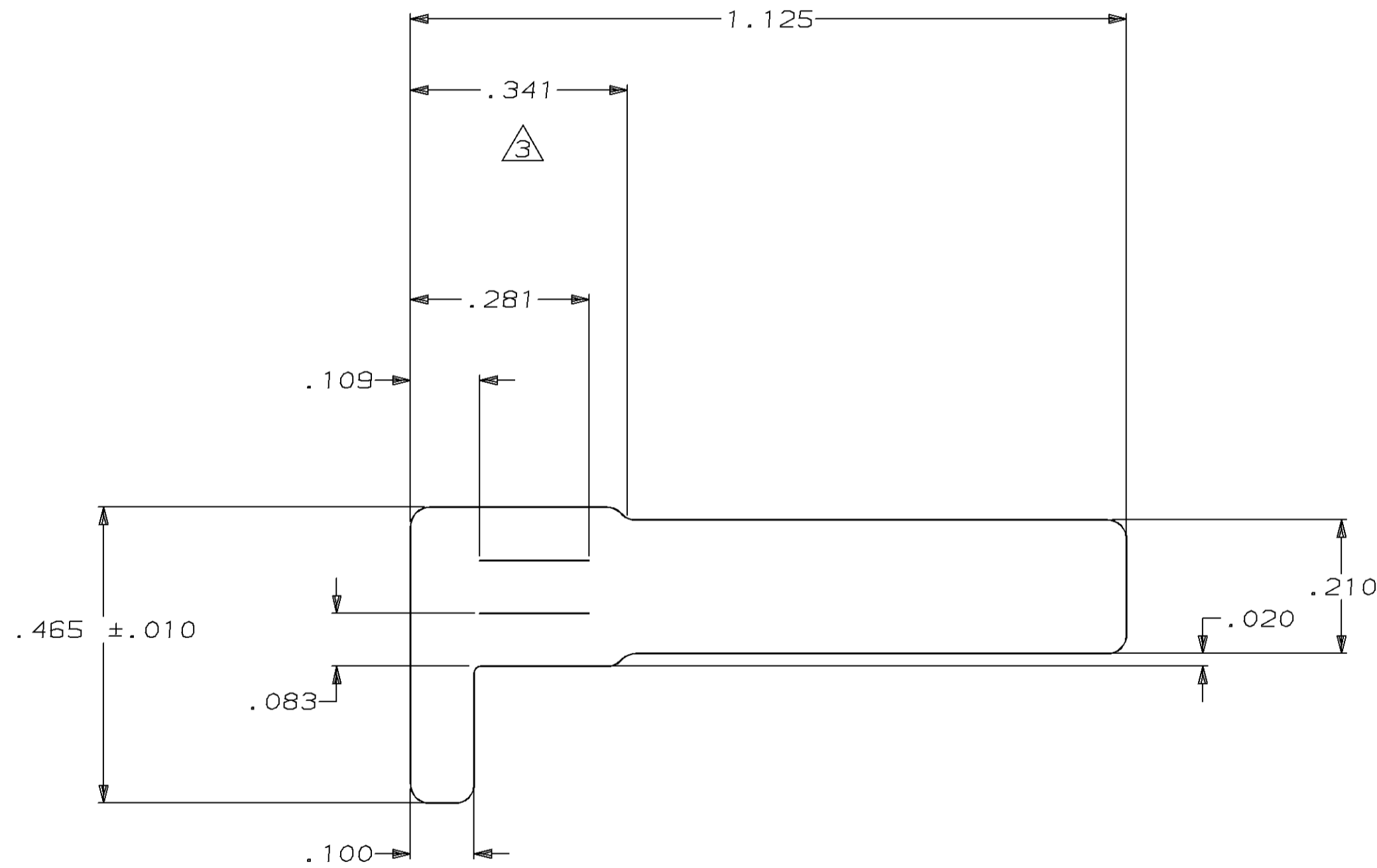
THIS DRAWING IS UNPUBLISHED. RELEASED FOR PUBLICATION
 BY AMP INCORPORATED. ALL RIGHTS RESERVED.

LOC	DIST	REVISIONS			
P	LTR	DESCRIPTION	DATE	DWN	APVD
CM	52				
	A	REV PER EC 0730-0209-95	11-28-95	JH	RS

SEE NOTE 1



- PART IS DESIGNED TOO PRESS FIT (BY HAND) ONTO A .093 PIN (AMP PART NO. 61137-1).
 - SOLDERABILITY SPECIFICATION: PARTS SUPPLIED MUST MEET LATEST REVISION OF MIL-STD-202 METHOD 208, OR AMP SOLDERABILITY SPECIFICATION 109-11-5.
- △ FROM INTENDED INTERSECTION.



794100-1
PART NUMBER

IN	MM	IN	MM
.109	2.77	-	-
.100	2.54	1.125	28.58
.093	2.36	.465	11.81
.083	2.11	.341	8.66
.020	0.51	.281	7.14
.010	0.25	.210	5.33
.005	0.13	.195	4.95

CONVERSION TABLE

METRIC

<small>THIS DRAWING IS A CONTROLLED DOCUMENT FOR AMP INCORPORATED. IT IS SUBJECT TO CHANGE AND THE CONTROLLING ENGINEERING ORGANIZATION SHOULD BE CONTACTED FOR THE LATEST REVISION.</small>		DWN B. LEWIS 8-30-95 CHK R. SWING 8-30-95 APVD W. LONG 8-30-95	AMP AMP Incorporated Harrisburg, PA 17105-3608
DIMENSIONS: INCHES 	TOLERANCES UNLESS OTHERWISE SPECIFIED: 0 PLC ±- 1 PLC ±- 2 PLC ±- 3 PLC ±.005 4 PLC ±- ANGLES ±0°30' FINISH PRE-TIN	PRODUCT SPEC - APPLICATION SPEC - WEIGHT - CUSTOMER DRAWING	NAME PC-BOARD DISCONNECT TEST SWITCH SIZE A2 CAGE CODE 00779 DRAWING NO. ©=794100 SCALE 5:1 SHEET 1 OF 1 REV A