

PRODUCT NUMBER

5 3 6 1 0 - X X X - X

PLATING  
S=15μ" [0.38μm] GOLD  
ON CONTACT AREA (NOTE 12)  
150μ" [3.81μm] TIN/LEAD ON TAIL  
ON TAIL

G=30μ" [0.76μm] GOLD  
ON CONTACT AREA (NOTE 12)  
150μ" [3.81μm] TIN/LEAD ON TAIL  
ON TAIL

LEAD FREE PLATING  
S=15μ" [0.38μm] GOLD  
ON CONTACT AREA (NOTE 12)  
100μ" [2.54μm] PURE TIN ON TAIL  
ON TAIL

G=30μ" [0.76μm] GOLD  
ON CONTACT AREA (NOTE 12)  
100μ" [2.54μm] PURE TIN ON TAIL

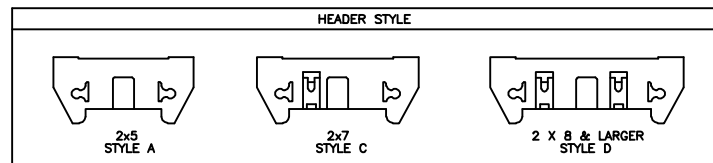
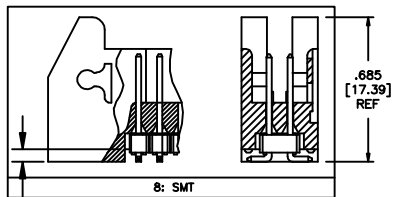
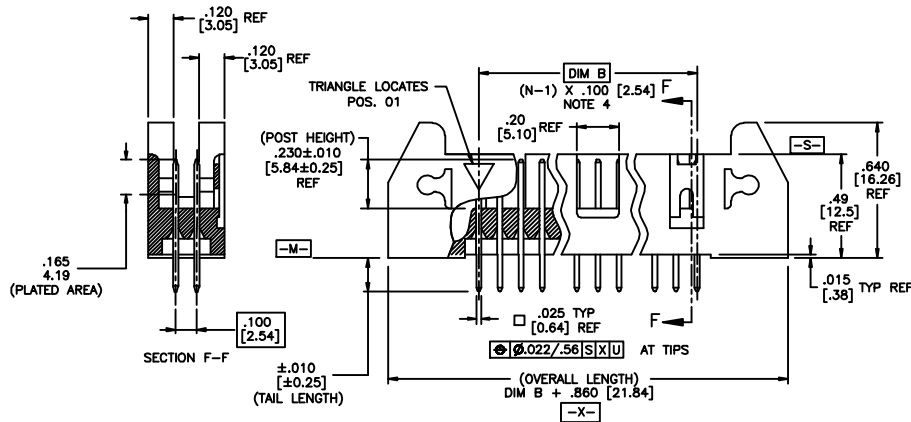
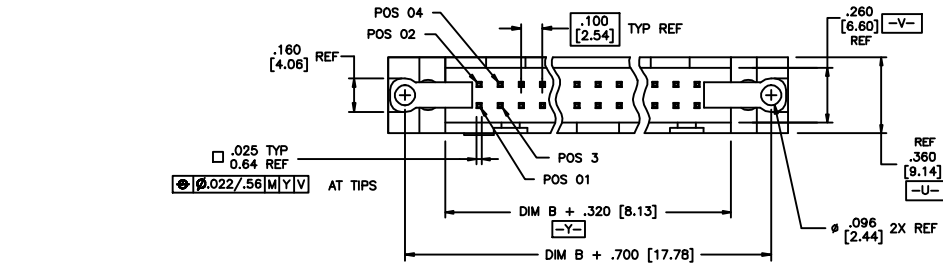
TAIL LENGTH  
1=.085/2.16  
2=.112/2.84  
4=.120/3.05  
5=.150/3.81  
7=.675/17.15  
8=SMT

LEAD FREE OPTION  
NOTE 9,10

RETENTION  
R= RETENTION LEG  
NOTE 5

POLARIZATION  
NOTE 8

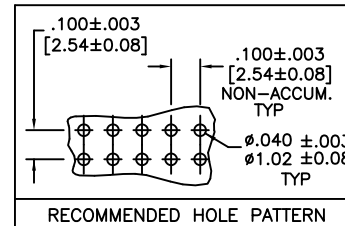
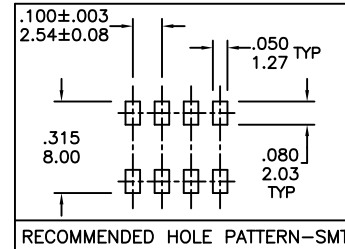
DASH NO.	POSITIONS	HEADER STYLE
10	2 X 5	A
14	2 X 7	C
16	2 X 8	D
20	2 X 10	D
26	2 X 13	D
34	2 X 17	D
40	2 X 20	D
50	2 X 25	D



mat'l. code	surface	tolerance	projection	product family
	ISO 902	ISO 406	ISO 1101	QUICKIE
ltr	ecn no	dr	date	title
B	VO1356	MEM	6/05/00	.100/2.54cc EJECT LATCH
C	VO2309	MEM	9/11/00	SHOROUDED VERTICAL HEADER
D	C10004	MDF	2/26/01	
E	M05-0089	ERE	5/20/05	
F	M06-0289	AGS	7/29/06	
G	M08-0237	MHT	8/25/08	
H	M08-0273	MHT	9/25/08	
sheet	revision	H	H	
index	sheet	1	2	

NOTES:

- ①. HOUSING MAT'L: HIGH TEMPERTURE THERMOPLASTIC. UL94V-0.  
COLOR : BLACK
- ②. PIN MATERIAL: PHOSPHOR-BRONZE
- ③. 3 LBS/1.36 KG MIN. RETENTION.
- ④. TO DETERMINE DIMENSION:  
N = NUMBER OF POSITIONS.  
EXAMPLE: 10 POS., (N-1) x .100[2.54]=.900[22.87]
- ⑤. RETENTIVE LEG:  
RETENTIVE LEG APPLICABLE TO TAIL LENGTH .120/3.05 ONLY.  
RETENTION IS APPLIED TO FOUR PINS ON PART SIZES OF 2x14 AND SMALLER,  
AND APPLIED TO EIGHT PINS ON PARTS SIZES OF 2x15 AND LARGER.  
5LB/2.3KG MAX INSERTION FORCE AND .25LB./1KG MIN RETENTION FORCE  
PER RETENTIVE PIN USING .062/1.57 THICK CIRCUIT BOARD AND RECOMMENDED  
HOLE PATTERN. RETENTIVE LOCATION AT THE DISCRETION OF THE MANUFACTURER.  
OMIT FROM PRODUCT NUMBER IF THIS FEATURE IS NOT APPLICABLE.
6. PACKAGED IN TRAYS.
7. UNDERPLATING: 50μ"/1.27μm Ni.
8. FOR POLARIZATION, SPECIFY POSITION NUMBER (i.e.. 03= PIN 3) TO OMIT PIN.  
OMIT FROM PRODUCT NUMBER IF THIS FEATURE IS NOT APPLICABLE.
- ⑨. ADD "LF" SUFFIX AT THE END OF PART NUMBER FOR LEAD FREE OPTION.
- ⑩. THIS PRODUCT MEETS EUROPEAN UNION DIRECTIVES AND OTHER  
COUNTRY REGULATION AS DESCRIBED IN GS-22-008.
11. THE HOUSING WILL WITHSTAND EXPOSURE TO 260°C PEAK TEMPERATURE  
FOR 15 SECONDS IN A WAVE SOLDER APPLICATION WITH A 1.5mm  
MINIMUM THICK CIRCUIT BOARD. SEE APPLICATION NOTES/PROCEDURES  
IF THEY ARE AVAILABLE.  
THE HOUSING WILL WITHSTAND EXPOSURE TO 260°C PEAK TEMPERATURE  
FOR 20 SECONDS IN A CONVECTION, INFRA-RED OR VAPOR PHASE REFLOW  
OVEN. SEE APPLICATION NOTES/PROCEDURES IF THEY ARE AVAILABLE.
- ⑫. PLATING OPTIONS:  
MAY BE EITHER GOLD OR GXT PLATED AT MANUFACTURER'S OPTION.



mat'l. code				surface ISO 1902	tolerance ISO 406 ISO 1101	projection INCH/MM	product family QUICKIE
ltr	ecn no	dr	date	tolerances unless otherwise specified		scale 1:1	title
H				angles	linear		.100/2.54cc EJECT LATCH SHOROUDED VERTICAL HEADER
				0°±2°	XX±.01/XX±.03 XXX±.005/XX±.013 XXXX±.0020/XXX±.0051		dwg no 53610
				dr	G. HULL	6/26/99	sheet 2 of 2 size A3
				enr	L. GREEN	7/12/99	type Product Customer Drawing
				chr	L. GREEN	7/12/99	
				appd	L. GREEN	7/21/99	
sheet	revision						
index	sheet						



Copyright FCJ